

Mutual Collaboration and Cooperation

Science Connect Ltd. is a socially responsible and environmentally sensitive organization that respects diverse voices and aspires for unifying disciplines (where possible and necessary) to address multi-faceted, non-linear and compounded contemporary challenges. The organization believes that fixing a problem requires thorough understanding of at-scale, inter-scale conditions and processes. In such circumstances effective partnerships and collaborations with other agencies, group of people's representatives and CoPs (Community of Practitioners) may help to know the diverse range of factors that cause malfunction of a system and manifested in a variety of ways and this 'knowing' is pivotal for providing appropriate solutions. Science Connect Ltd. welcomes productive, mutually respectful partnerships with other entities so that noble and generous solutions could be provided towards sustained welfare and peace of the society. The organization has worked as partner with Institute of Development Studies (IDS, University of Sussex, UK), Brunel University London (UK), Asian Institute of Technology (AIT, Thailand), PRISM (INDIA).



General Information

Name of the Organization
Registration No.

Science Connect Ltd.
Registrar of Joint Stock Companies & Firms, Bangladesh
(Certificate of Incorporation under Act XVIII of 1994). No. C-167646/2021
Dhaka North City Corporation. No. 426171

Trade License no.
Type of Organization
Year of Establishment

A Private Company
2021

Tax Payers Identification Number
Address

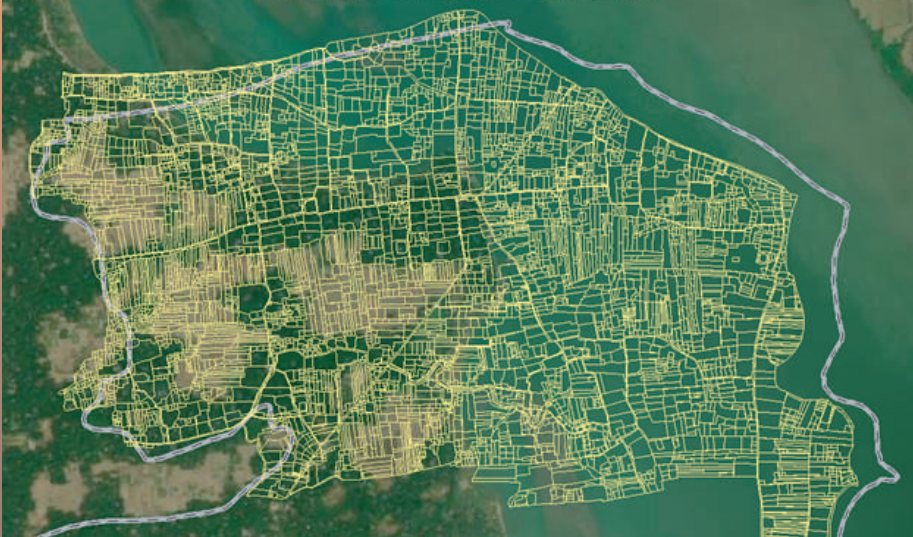
National Board of Revenue, No. 690073375378
DDL Madhobilata, Flat- A2, House- 226/2, Road-10/A, Madhubazar, West
Dhanmondi, Dhanmondi, Dhaka, 1205, Bangladesh

E-mail
Website

nayem.sc20@gmail.com
<https://scienceconnectbd.com>



Connecting Science for Sustainable and Inclusive Development



Science Connect Ltd. is a Center of Excellence for conducting research on environment and development, providing professional services in a number of fields such as terrestrial environment, water resources, forest and ecology, ecosystem services, agriculture, fisheries, power, energy and climate change. Science Connect Ltd. uses state-of-the-art technologies namely geo-informatics that includes GIS and space and air-borne technologies, apply information technology, modeling and capable of employing social-science research techniques and tools. It works both independently and in collaboration with the national and international academic and research institutions, Government and Non-Government Organizations.

Vision

Creating an enabling atmosphere where societal challenges in five capital areas, i.e. natural, physical, social, economic, ecological functions and processes are understood better based on systematic and analytical processes using scientific data, methods, tools and the strength of integration of disciplines.



Mission

Two strategic actions characterize the mission of the organization. These are (i) work for the society through evidence-informed decision making and (ii) connecting science with the problem-solving environment.

Science Connect Ltd. performs capacity building actions in the public domain involving learners, professionals, communities on the value of science; promote creativity and responsible application of science in a variety of needs. The organization acts as the voice for the people who are vulnerable and for the environment that is disturbed based on the principles of inclusiveness, equity and sustainability.

Management of Science Connect Ltd.

The Executive Director (ED) is the Chief Executive Officer of Science Connect Ltd. and in that capacity the ED manages the regular operational affairs of the organization. The activities of Science Connect Ltd. are organized under eight thematic domains or units namely Geo-spatial Applications, Water Resources and River Morphology, Climate Change and Modeling, Social and Environmental Impact Assessment, Information and Communication Technology (ICT), Research and Training, Survey and Exploration, Finance and Accounts unit. The activities are supervised by the Board of Directors which is comprised of four Directors. The Chairman of the organization plays overall supervisory roles for the organization and connecting internal functions and operations with external resources/affairs.

Products and Services

A highly qualified multidisciplinary group of experts having capacity to apply state-of-the-art tools and technologies is the strength of Science Connect Ltd. They provide solutions to the problems in the sectors of water, land and other natural resources, biodiversity, agriculture, fisheries, engineering, transportation, culture & heritage, and environment of Bangladesh and beyond. The major areas of services provided by Science Connect Ltd. are as follows.

- Initial Environmental Examination (IEE)
- Environmental Impact Assessment (EIA)
- Environmental Management Plan (EMP)
- Social Impact Assessment (SIA)
- Pre-Feasibility and Feasibility Studies
- Climate Change – Adaptation and Mitigation
- Hydro-morphological Study
- Disaster Monitoring and Damage Assessment
- Land Information Management
- Survey Work

Expertise and Professionals

Science Connect Ltd. is an interdisciplinary matrix organization. Professionals from different units are drawn for their technical inputs as per the need of the assignment. Progress is reviewed in periodic meetings. Specialists and professionals are attached to the thematic units and render their services as long-term and short-term staffs or consultants. The senior level professionals have more than ten years of experience in their respective field of expertise and are supported by a group of young resourceful professionals with postgraduate degrees.

